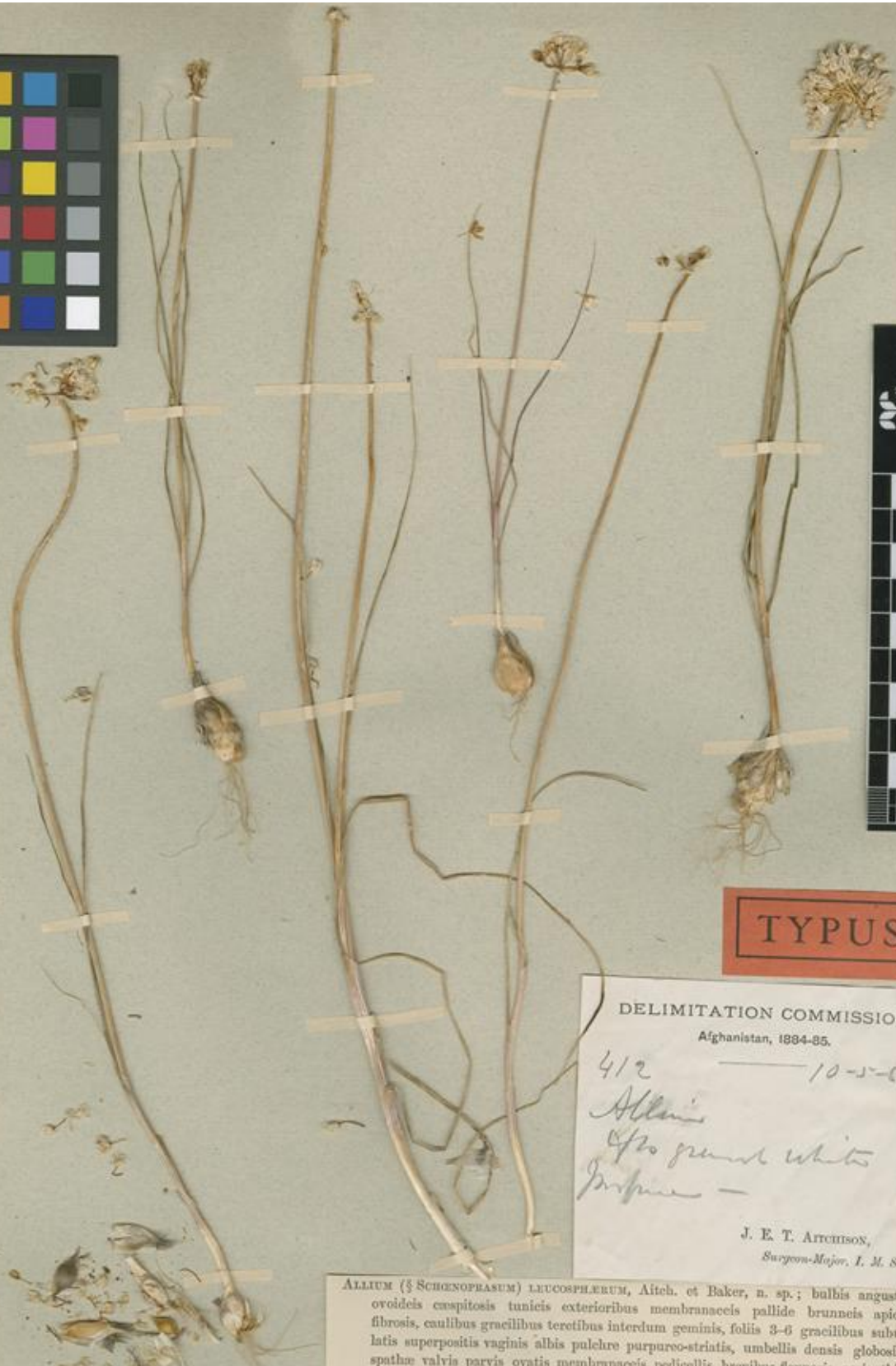


Type of *Allium leucosphaerum* Aitch. & Baker [family ALLIACEAE]

Herbarium	Swedish Museum of Natural History Department of Phanerogamic Botany (S), S-G-7925
Collection	Type Specimens
Resource Type	Specimens
Collector	, #
Collection date	1885/5/10
Locality	Hari-rud Valley.
Country	Afghanistan (Afghanistan)
Identifications	Type of <i>Allium leucosphaerum</i> [family] (stored under name);
Notes	[Habitat acc. to label:] Very common in stony soil and in cultivated land. [Description acc. to label:] Fls white.
Data last modified	2009-11-19

<http://plants.jstor.org/specimen/s-g-7925>



TYPUS.

DELIMITATION COMMISSION.
 Afghanistan, 1884-85.
 412 ————— 10-5-85
Allium
sp. ground white
Japan —
 J. E. T. AITCHISON,
 Surgeon-Major, I. M. S.

ALLIUM (§ *SCHEENOPRASUM*) *LEUCOSPHERUM*, Aitch. et Baker, n. sp.; bulbis anguste ovoides cuspidatis tunicis exterioribus membranaceis pallide brunneis apice fibrosis, caulibus gracilibus teretibus interdum geminis, foliis 3-6 gracilibus subulatis superpositis vaginis albis pulchre purpureo-striatis, umbellis densis globosis, spathae valvis parvis ovatis membranaceis, pedicellis brevibus flexuosis, perianthio campanulato parvo segmentis oblongis subacutis albis viridulo carinatis, staminibus inclusis filamentis ovatis acuminatis.

Bulbi 5-6 lin. diam., tunicis exterioribus membranaceis ferrugineis, nervis crebris parallelis anastomosantibus. *Pedunculus* pedalis et ultra. *Folia* semipedalia glabra basi vix ultra $\frac{1}{2}$ lin. diam., vaginis imbricatis hyalinis venis parallelis pulchre purpureis. *Umbella* densa, 12-15 lin. diam., spathae valvis fugacibus 3-4 lin. longis, pedicellis demum 4-6 lin. longis. *Perianthium* 2 lin. longum, segmentis valde imbricatis oblongis subacutis costa viridula demum brunneola.

Ad *A. subulosum*, Stev., et *A. rubellum*, Bieb., magis accedit.

Hari-rud valley : 412, May 9, 10, 1885. Very common in stony soil and in cultivated land.

Herbarium number
 S-G-7925